

SANTA GERTRUDIS BREEDERS INTERNATIONAL CERTIFICATE OF REGISTRATION

NAME CORAZON 06ET01 (ET)
REGISTRATION NO 1264544
CALVED 06/30/2008
BRAND NUMBER 6ET1
BREED CATEGORY PB

SEX Male
HPS Polled
BLOOD TYPE/DNA NO / NO
SALE DATE 03/01/2008

PREVIOUS OWNER 1900 FIVE OAKS RANCH, VALLEY MILLS, TX
BREEDER 35731 CORAZON CATTLE CO. LLC, ALBUQUERQUE, NM
PRESENT OWNER(S) 38695 STEVE & DODIE MILLS
 1200 COUNTRY CLUB
 MIDLAND TX
 79701

	BW		YW		YW		Mat		TMat		HCW		REA		Marb		Fat	
	EPD	ACC	EPD	ACC	EPD	ACC	EPD	ACC	EPD	ACC	EPD	ACC	EPD	ACC	EPD	ACC	EPD	ACC
6ET1	0.0	PE	6	PE	11	PE	1	PE	4	-	-1.00	PE	-0.05	PE	0.01	PE	-0.02	PE
SIRE	1.2	.70	13	.63	21	.63	2	.62	9	-	0.79	.50	-0.04	.42	0.02	.50	-0.06	.42
DAM	-1.3	.52	-1	.50	2	.50	0	.49	0	-	-2.79	.36	-0.06	.26	0.00	.35	0.02	.25

WEIGHT INFORMATION

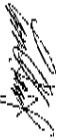
BIRTH WEIGHT	64
ACT. WEAN WT.	
ADJ 205 WT.	
ACT. YEAR WT.	1006
ADJ 365 WT.	
ADJ 452 WT.	N

ULTRASOUND INFORMATION

AGE IN DAYS	
WEIGHT	
W/PDA	
RIBEYE AREA	
REA PER CWT	
IMF	
FAT AT 12th RIB	
FAT AT RUMP	

has been accepted for entry in the Santa Gertrudis Pedigree Record, such acceptance being based on an application duly certified by the breeder. This certificate and entry is subject to correction or cancellation under the bylaws of this association.

SANTA GERTRUDIS BREEDERS INTERNATIONAL
 BOX 1257, KINGSVILLE, TEXAS, 78363



Executive Director
 Santa Gertrudis Breeders International

4-3 LAZY E RANCH

S 1138377 P 6119 LAZY E BULLET
 2788 GEORGE D JACOBS *
 S 1026946 P 877 RINGO

2788 GEORGE D JACOBS *
 1052794 P 024 024

19171 HUNTSDIAMOND H FARMS

1202139 P 961 HUNT'S DHF MISSILE 961
 1949 EUEL A HAMMETT
 S 1142897 P 681/6 HAMNETTS 681/6

1949 EUEL A HAMMETT
 S 1049472 P 336/0 HAMNETTS 336/0

1949 EUEL A HAMMETT

1949 EUEL A HAMMETT
 S 1082410 P 402/2 E.A.H.402
 8656 LONG SHOT SEVEN
 S 1063056 S 3/4 LONG SHOT SEVEN 3/4

11837 J M R RANCH

1-28653 S 514/4 ROHO
 20808 GARRETT WERROCKS
 1214506 D 67-31 BC TOPAZ

3621 MARTIN BROTHERS *
 S 862997 46/5 46/5

20808 GARRETT WERROCKS

4900 HAMPTON HILLS SANTA GERTRUDIS
 1-70926 H 67-98 H H BLOSSOM
 4900 HAMPTON HILLS SANTA GERTRUDIS
 1137473 H 67-5 H H 67-5

4900 HAMPTON HILLS SANTA GERTRUDIS
 1099954 4-3 HAMPTON HILLS BEAR

ZEBU CROSSBREEDING

ZEBU, the world's oldest domesticated cattle, originated in India, and were first introduced into the United States as early as 1849. Although the first importations of Zebu were comprised of bullocks for draft purposes, introduced into cotton plantations of South Carolina and Louisiana, they in time became inter-mixed with the other cattle breeds, and even in their earliest day produced hybrids which were bigger, growthier, and more thrifty and yielded better than the cattle which the colonists had brought from Europe.

Late in 1800, Texas cattlemen who procured Zebu crossbred cattle from the Southern area of Louisiana found them much hardier and much more resistant to Texas Tick Fever. In time, large numbers of the cattle, throughout the gulf coast zones of Louisiana and Texas became dominated by the Zebu influence, because under the circumstances, crossbreeding had become the most economical solution to their problem of production. Today this influence has continued to spread throughout the Southern and Western part of the United States, only because it still represents good economics.

The diverse genetic differences of Zebu cattle of Indian origin, and cattle of European origin, has made their crossbreeding as practical as the hybridization of different strains of corn. Likewise, the hybrids resulting from Zebu crossed on Hereford, Angus, or Shorthorn cattle produce larger, growthier and more thrifty animals because of the added vigor that comes as the normal result of hybridization.

In more recent years, with the crossing of these cattle breeds becoming more selective in regards to the parent animals, even more remarkable advantages have become evident. Like its Zebu parent, the crossbreed can utilize roughages and other feedstuffs much more efficiently than most cattle.

It is widely accepted by cattlemen who have experience with crossbreeds, that they mature quicker in ad-



ZEBU—Angus Cross

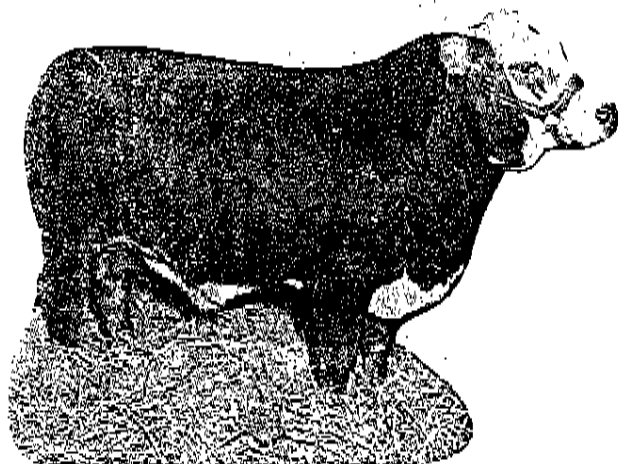
dition to being bigger and heavier. Southern and Western cow ranches expect their crosses to weigh at least 100 pounds more at weaning time, than straight bred calves. They usually are ready for market and can be taken off the mother cows 45 to 60 days earlier than calves of other breeds. The vigor and hardiness of the crossbreed gives them more resistance to disease and insect pests. They have a wider range of adaptability to climatic change, and are as versatile in cold climates as in tropical zones.

Crossbreeds are excellent feeders, and their rates of gain are unsurpassed. Western feed yards in Arizona and California, once stocked entirely with animals of the British breeds, are carrying larger and larger percentages of crossbreeds. Well selected crosses of good quality cattle finish to the top grades 30-45 days sooner, and their dressing percentage is 2-3% greater than straight bred animals.

Crossbreed carcasses cover well, without excessive fat deposits, and carry excellent marbling. They cut out 3 to 5% more hindquarter meat, and produce excellent flavored beef.

Top quality crossbreeds can be produced by crossing a well selected Zebu bull upon any of the more prominent beef breeds. In Southern areas Hereford, Shorthorn, and Angus bulls are often used on Zebu cows to produce the same result. Crosses vary in color in accordance with the color patterns of the parent animals. Zebus vary in color from light shades of gray to dark steel and black, to reds, and intermediate shades, with spotting often found on the dewlap of the darker colored animals. Zebu crosses from dairy breeds producing excellent results toward producing either veal or baby beef, and the hybrid growth resulting from Zebu crossed with the milk breeds, makes dual purpose utilization highly effective.

The prominence of Zebu crossbreeding is well reflected by America's new cattle breeds. Breeds such as the Santa Gertrudis, Charbray and Brangus are all a tribute to the value of Zebu blood to our American cattle industry.



ZEBU—Hereford Cross